

Noelle Pollington & Sam Vicary



Mixed Media & Stitch Paintings

Exhibition 28 June – 13 July 2024



Rain Approaches, Carningli – acrylics on canvas, 85 x 85cm - £945

Front Cover:

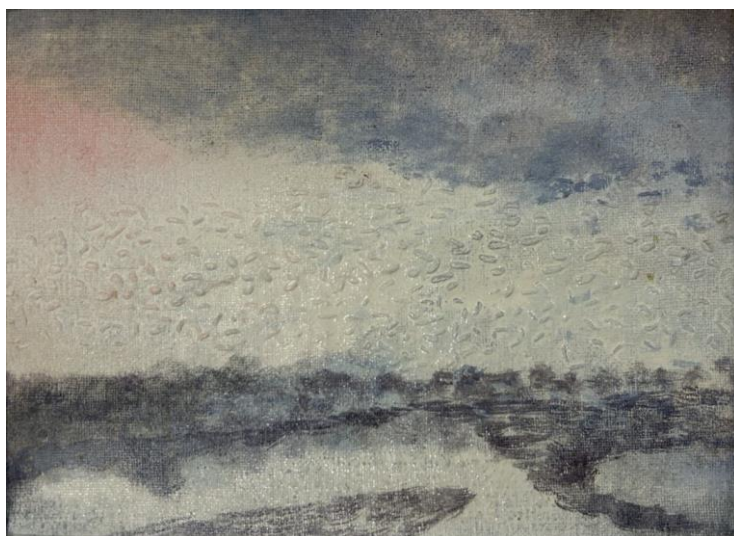
Clouds at Dusk, Carningli – acrylics on canvas, 85 x 85cm - £945;
Passage: through Ty Canol I - Embroidery, acrylic and oil on linen, 29.5 x 24.5cm - £320



Above the valley - Embroidery, acrylic and oil on linen, 29.5 x 24.5cm - £320



Evening Storm gathers, Garn Fawr – acrylics on board, 52 x 52cm - £495



Passage: across sands - Embroidery, acrylic and oil on linen, 29.5 x 24.5cm - £320



Passing Over Preseli Mountains – acrylics on canvas, 55 x 55cm - £595



Nevern Estuary, twilight – acrylics on linen, 35 x 45cm - £495



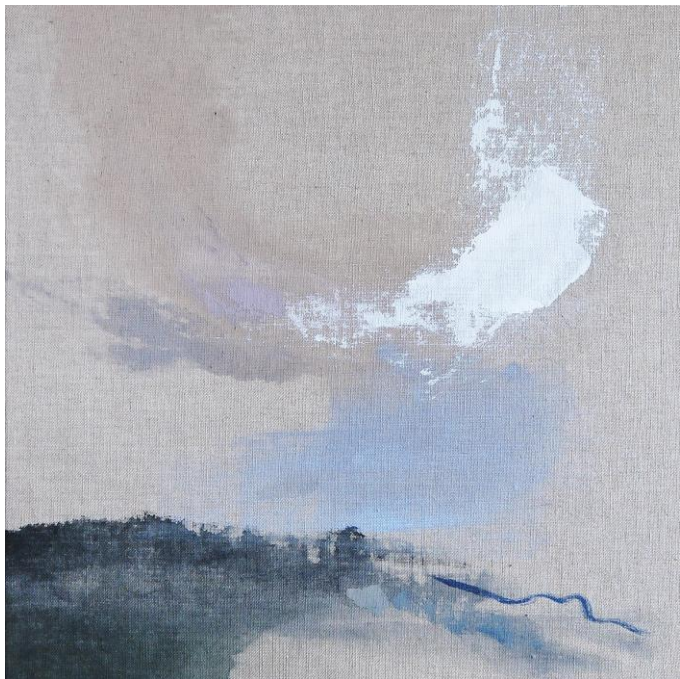
Foxhill 2 – Embroidery, acrylic and oil on linen, 36 x 34.5cm - £350



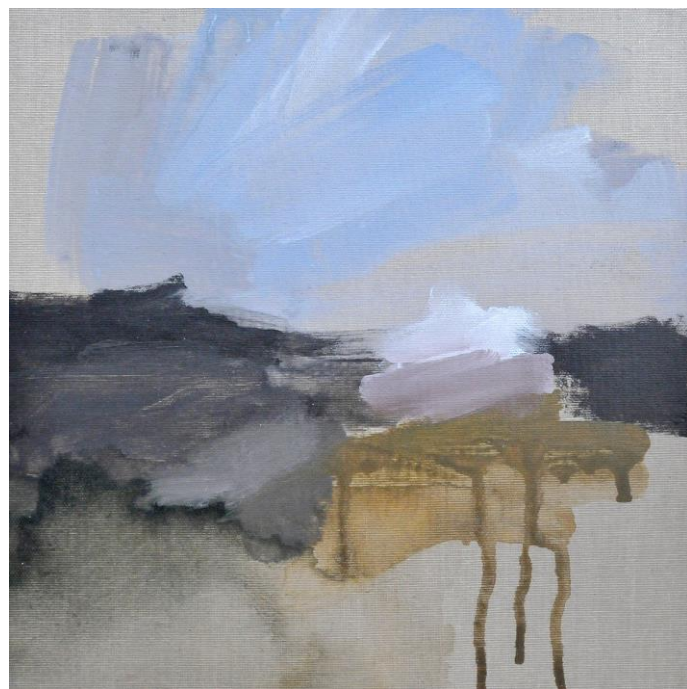
Foxhill I - Embroidery, acrylic and oil on linen, 37 x 36.5cm - £350



Clothed – Embroidery, acrylic and oil on linen, 42 x 37cm - £350



Dawn breaks - Dinas Mountain – acrylics on linen, 30 x 30cm - £375



Autumn squall over Preseli's – acrylics on board, 30 x 30cm - £375



Newport nestled beneath – acrylics on board, 30 x 30cm - £375



Passage: across fields - Embroidery, acrylic and oil on linen, 29.5 x 24.5cm - £320



Passage: Through Ty Canol II - Embroidery, acrylic and oil on linen, 29.5 x 24.5cm - £320



Skirting the Woods II - Embroidery, acrylic and oil on linen, 37 x 31.5cm - £400



Skirting the Woods I - Embroidery, acrylic and oil on linen, 37 x 31.5cm - £400



Preseli Pass 1 - Embroidery, acrylic and oil on linen, 42 x 41.5 cm - £350

Artists Background..

Noelle Pollington and Sam Vicary are friends who have come together to create a joyful collection of work about landscape and belonging.

Noelle is a multi media artist from Pembrokeshire. Since graduating from the University of Central England with a degree in 'Visual Communication' she works extensively as a freelance photographer, designer and artist.

Noelle lives on the edge of 'Dinas Island'. Nestled beneath the Preseli mountains and within walking distance to the sea. She aims to imbue this timeless sense of place and belonging in her painting.

Her paintings use techniques that dilute paint, immersing it into the canvas. Using sweeping gestures and intuitive mark making, creating images that are responsive, layered and emotive.

The earthy tones of the land and inky blue of the sea, the breath of wind through clouds and the rhythmic rise and fall of the tide. Noelle aims to distill in her images the sensations and atmosphere of untamed Pembrokeshire.



Sam is a painter from Wales who studied Fine Art and has a career working in the arts in Wales. In these small works, she uses embroidery thread, acrylic and oil paint to stitch and follow the rhythms of the landscape. Inspired by ancient woodlands, lanes and pathways around the Preselis and beyond, these intuitive, quiet studies have a still and sometimes eerie quality. "Sam Vicary's work captures the elemental sense of landscape and, crucially, its emotional resonance. Her art has an almost ethereal quality, which tells of the 'hud ar Ddyfed' – in mythology, the magic that lies upon Dyfed, that far south-west corner of Wales where the land feels ancient, and people have lived within it with a deep sense of belonging." Cathryn Gwynn 2023.

