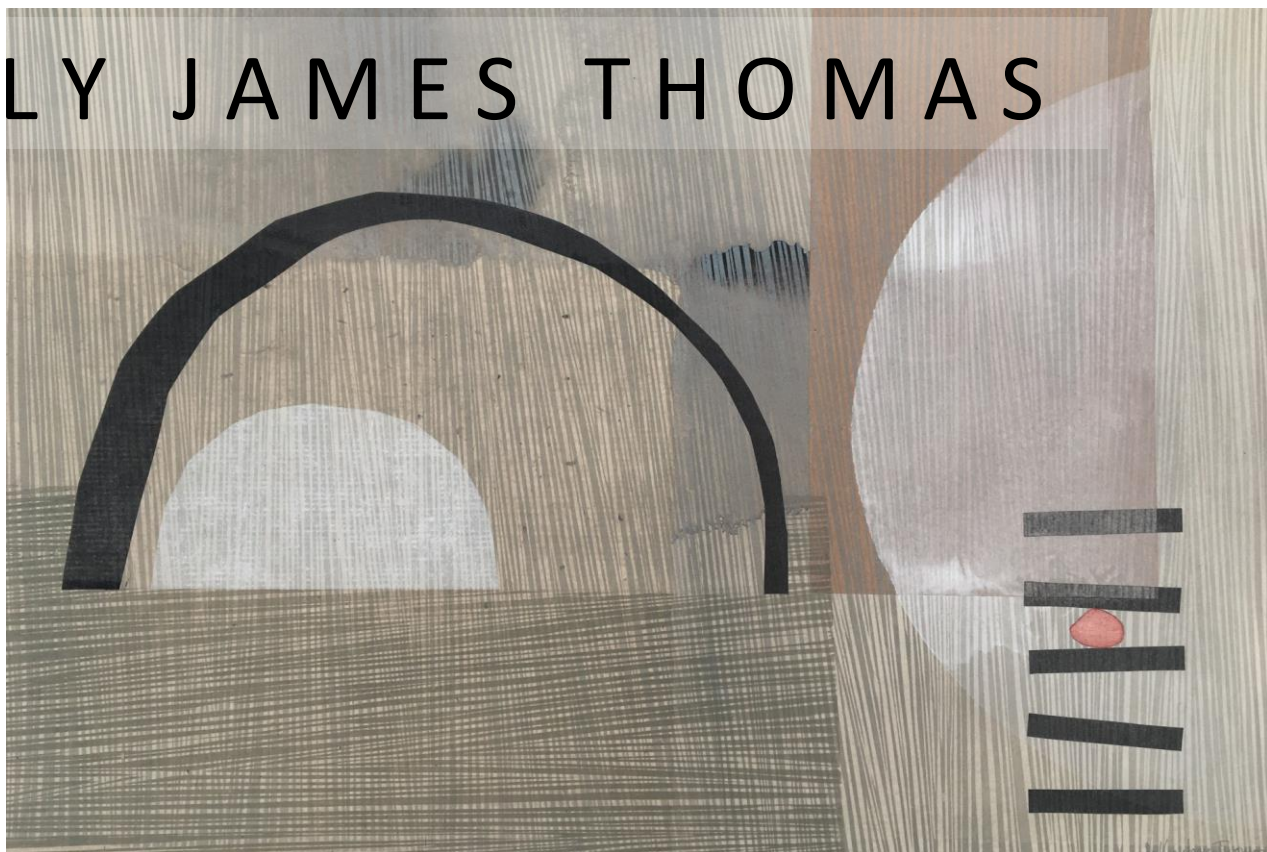


SALLY JAMES THOMAS



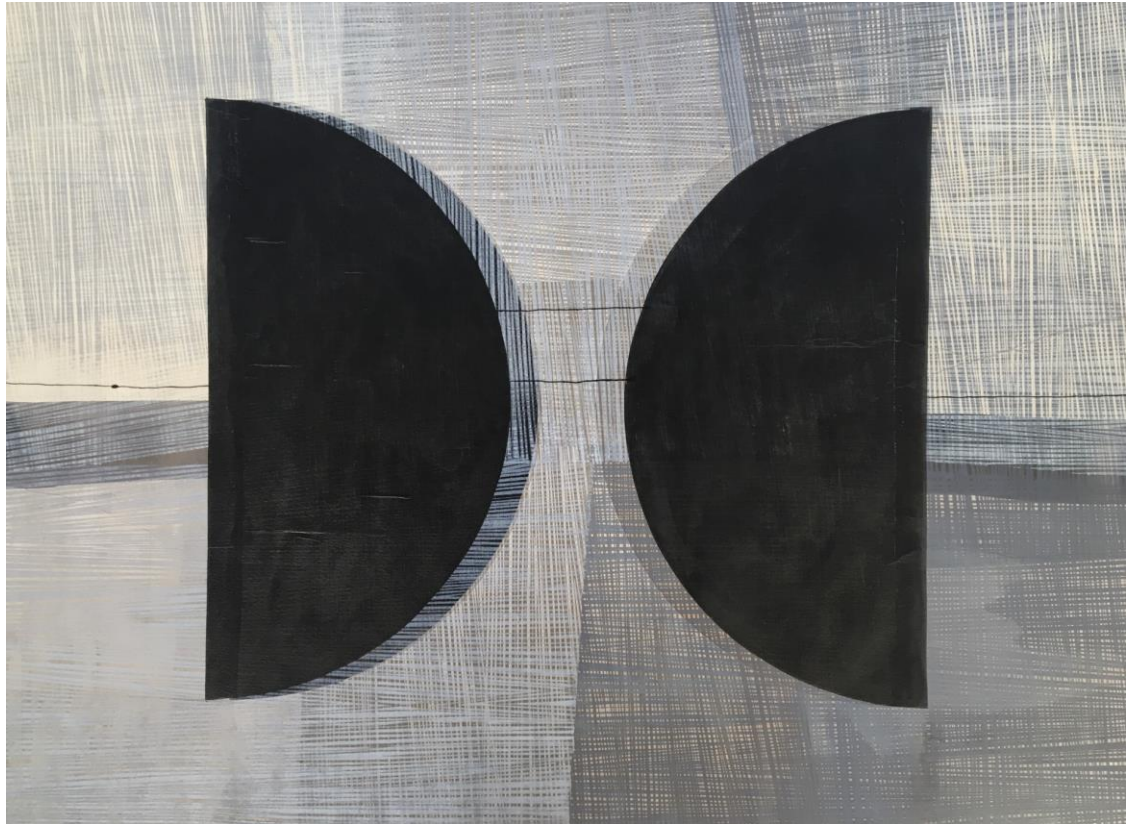
QUIET ESTUARY

27 october – 11 november

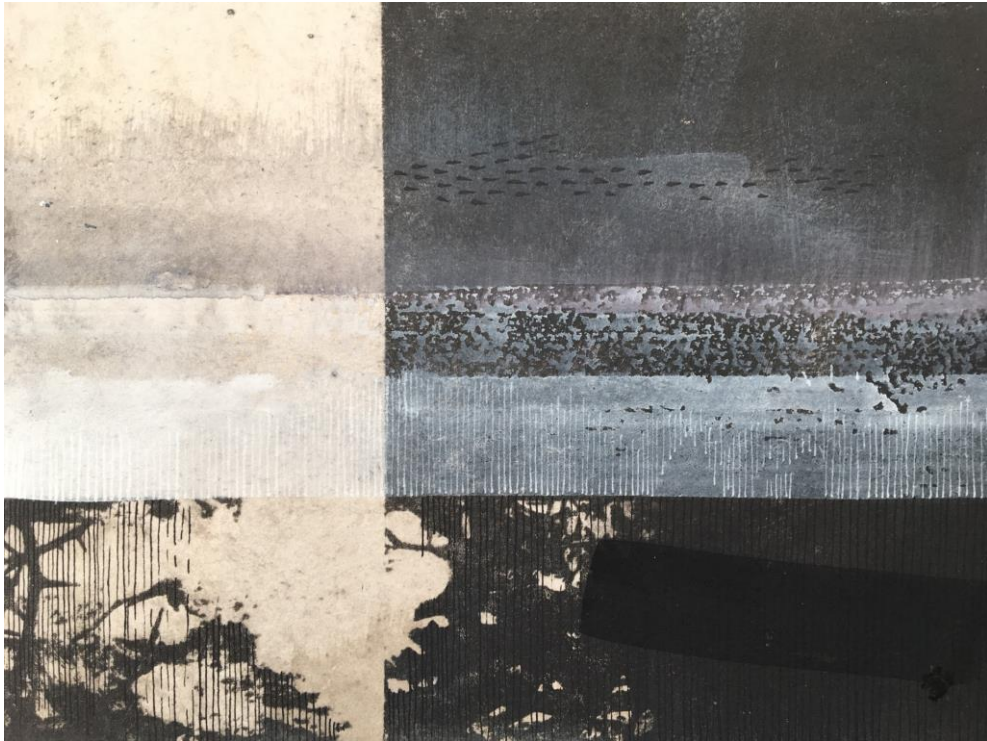
THE GALLERY YR ORIEL NEWPORT PEMBS



'Quiet estuary iii' - mixed media on paper, 19 x 19cm - £425
Front Cover: 'Through day' - mixed media on paper, 36 x 53cm - £795



'Dawn emerges' - mixed media on paper, 55 x 75cm - £1,150



'Quiet estuary : dusk' - mixed media on paper, 14 x 20cm - £375



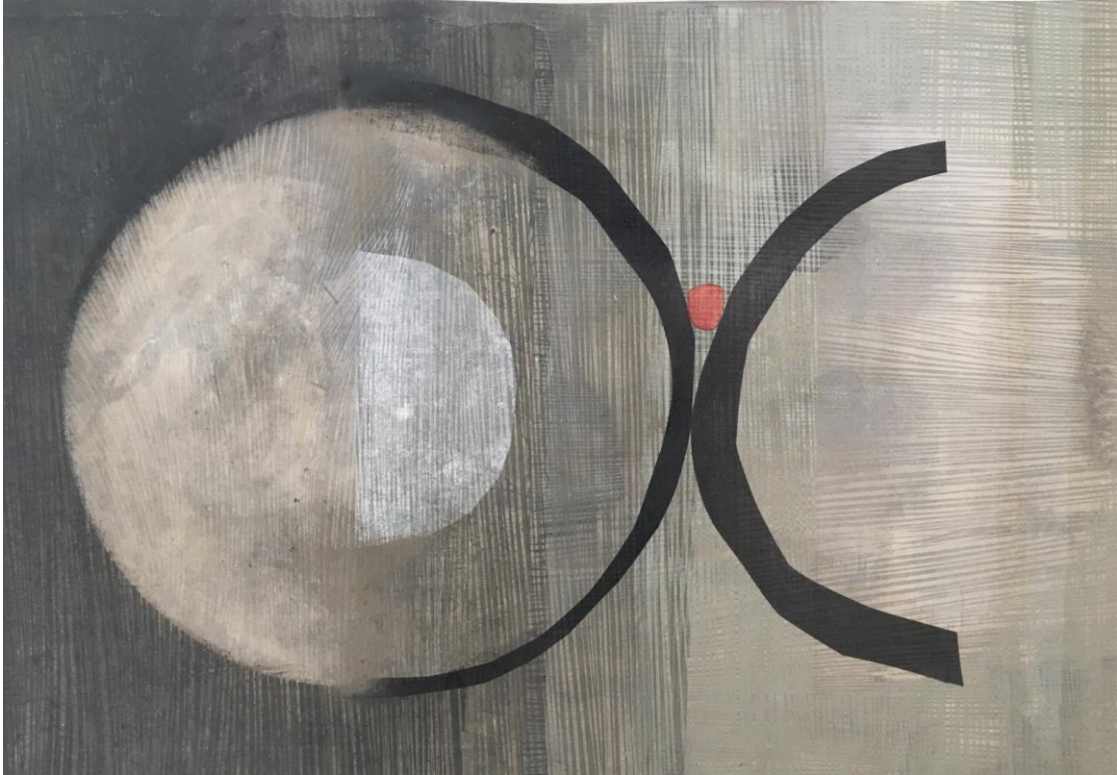
'Eclipse' - mixed media on paper, 45 x 32cm - £725



'Quiet estuary i' - mixed media on paper , 19 x 20cm - £425



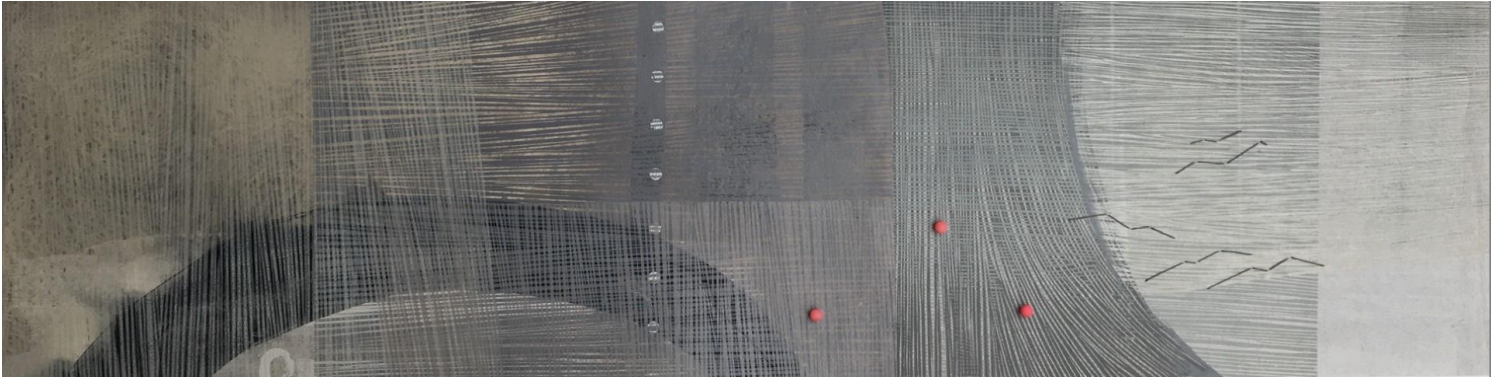
'Quiet estuary: setting' - mixed media on paper, 17 x 20cm - £415



'Through evening' - mixed media on paper, 37 x 54cm - £795



'Quiet estuary: evening' - mixed media on paper, 15 x 17cm - £395



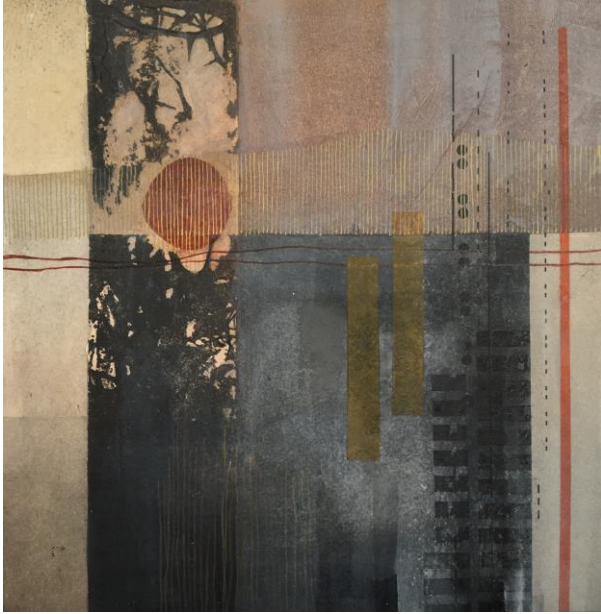
'Storm beyond the estuary' - mixed media on paper, 25 x 97cm - £950



'Quiet estuary ii' – mixed media on paper, 19 x 20 cm - £425



'Quiet estuary iv' Approx. 19 x 19 cm Mixed media on paper £425



'Evening sun, estuary' – mixed media on paper, 19 x 20cm - £425



'Hawthorn + rushes' – mixed media on paper, 14 x 23cm - £375



'Morning, estuary' – mixed media on paper, 14 x 23cm - £365

Quiet Estuary

Seemingly in a state of slow, but constant shift. A migratory haven, influenced by the pull of the moon. Quiet, contemplative. From time spent observing Newport estuary, the work is an attempt to interpret the still and the ever changing. The printmaking elements are often used to represent that which is constant and can be repeated; with painted, drawn or collaged marks used to document more fleeting moments of change and shift in both our external and internal worlds. There are questions which emerge or are purposefully posed. Answers are often elusive, fleeting and tidal.

Sally James Thomas 2023

Born in Wales and raised in North Pembrokeshire, Sally graduated from Middlesex University in 1995 with a degree in Fine Art with Sociology. Living, working and engaging with a rural, coastal environment continually influences her use of colour, texture and subject-matter.

Through a combination of techniques, Sally explores strength and presence – contrasted with concepts of the ephemeral and disintegration. Time, space and both natural and human influences are referenced. Natural and synthetic shapes, forms and textures are integrated into her work and simulated by the exploration of materials.

The physical process of making reflects the relentlessness of the elements. Isolation and fragmentation are often inferred. Her strong interest in geology and archaeology is linked with the compression element necessary for printmaking. Printmaking is used, often not to produce multiples, but for the distinctive qualities that can be achieved. For over 25 years Sally has exhibited throughout the UK and internationally.

