

An abstract painting featuring a large, textured, yellow and orange shape in the lower half, set against a background of blue and green brushstrokes.

Lyndon Thomas

The Promised Land / Gwlad yr Addewid

Exhibition June 24 – 16 July 2022

Show Launch Friday 24 June 5 – 7pm

THE GALLERY YR ORIEL NEWPORT PEMBS



Lleyn Landscape - acrylics on paper, 120 x 45cm framed - £750

Front Cover: Dinas Head – acrylics on canvas, 44 x 34cm framed - £550



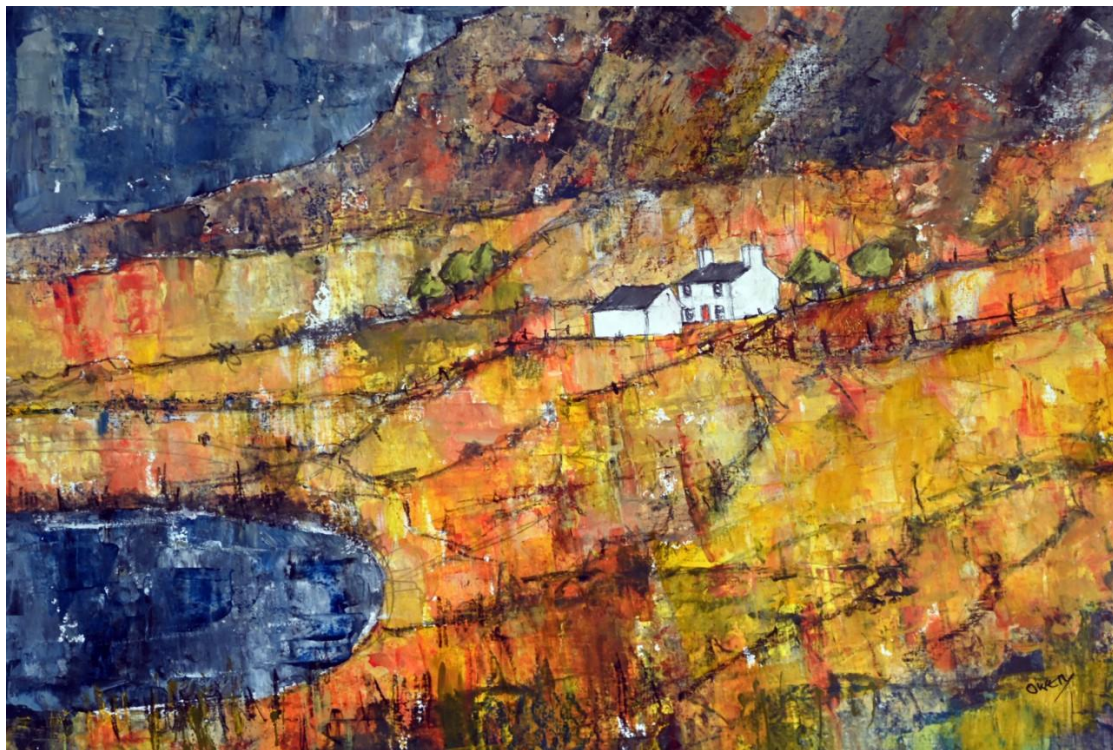
Path to the Sea, Llyn – acrylics on paper, 100 x 70cm framed - £825



Carreg Cennen – acrylics on paper, 91 x 70cm framed - £795



Pembrokeshire Coast – acrylics on paper, 62 x 54cm framed - £525



Capel Curig – acrylics on paper, 90 x 50cm framed - £725



Pembrokeshire Cottage – acrylics on paper, 48 x 40cm framed - £450



Lley – acrylics on paper, 80 x 60cm framed - £695



Cwm Ogwen – acrylics on paper, 120 x 42cm framed - £725



Snowdonia Farm – acrylics on paper, 120 x 45cm framed - £750



Pembrokeshire Landscape – acrylics on paper, 59 x 59cm framed - £550



Lleyn Coast – acrylics on paper, 60 x 50cm framed - £495



Cadair Idris – acrylics on paper, 80 x 70cm framed - £725



Lleyn Cottage – acrylics on canvas, 104 x 24cm framed - £695



Cwm Croesor – acrylics on canvas, 104 x 24cm framed - £695



Preseli Cottage – acrylic on paper, 57 x 49cm framed - £495



Path to the Promised Land – acrylics on paper, 100 x 72cm framed - £850



Rhinos – acrylics on paper, 120 x 42cm framed - £725

The Promised Land / Gwlad yr Addewid

My artistic career has spanned five decades that include three diverse yet creatively linked disciplines, painting, pottery and wood turning.

I first exhibited paintings, mainly figurative oils in the early 1960's. The work at the time attempted to place industry into landscape. I changed direction in 1966 and started making stoneware pottery that was exhibited throughout Wales and England. I restarted painting in 2008 evolving a method of working in acrylic on paper, using painting knives to achieve desired effects. The bulk of my subject matter is the landscape of North Pembrokeshire and Llyn Peninsula, the two western extremities of Wales. I am particularly interested in human habitation within the landscape, habitation often isolated, almost apologetic in its setting. After initial sketches, I return to the studio and the painting progresses and becomes the synthesis of observation, memory and emotional reaction to the subject.

The exhibition is representative of work produced over the past year, and will also include some selected pieces of pottery from my collection. The title, The Promised Land, sums up my feelings towards the beautiful land and seascapes that are found throughout Wales.

Lyndon Thomas