



# Clare Rose

Always the light falls | 8 – 29 April 2022

THE GALLERY YR ORIEL NEWPORT PEMBS



The Light Fantastic, Preseli's - oils on panel, 23 x 15cm framed - £395

*Front Cover:* Green Fires lit..... - oils on panel, 31 x 31cm framed - £495





Promises, Promises - oils on panel, 31 x 31cm framed - £495



Proud Pied April - oils on panel, 31 x 31cm framed - £495



Beachfront Pembrokeshire – oils on panel, 31 x 28cm - £495





Poppit Reflections - oils on panel, 32 x 29cm framed - £495



Studio Still life - oils on panel, 41 x 31cm framed - £550



Under a Spanish vine - oils on panel, 41 x 41cm framed - £595





Butterbur in the Mist - oils on panel, 23 x 15cm framed - £395



Land Ho! Migrations End - oils on panel, 31 x 29cm framed - £495



Snowqueens in Spring - oils and silver leaf on panel, 125 x 125cm framed - £3,500





Approaching Squall Pembrokeshire - oils on panel, 31 x 31cm framed - £495



Harbour Lights - oils on panel, 61 x 41cm framed - £995



Studio Study - oils on panel, 30 x 20cm framed - £450

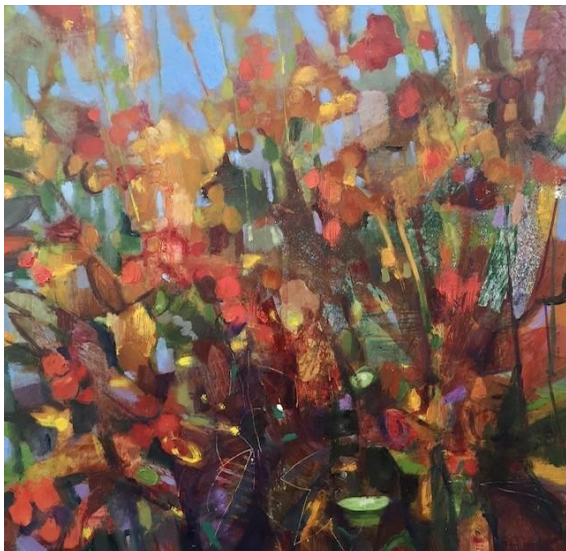




Abstracted Bouquet - oils on canvas, 30 x 30cm framed - £495



Safe Harbour – oils on canvas, 30 x 30cm framed - £495



Wildflower Bouquet - oil on panel, 41 x 41cm framed - £595



Sunflower Boogie - oils on panel, 41 x 31cm framed - £550

## Always the Light Falls

This new body of work is the by-product of some 30 years of intermittent (yet intense) painting and study; painting successes & many failures. Originally a self taught painter, I gained a first and distinction in my BA and MA Fine Art degrees at Aberystwyth University, where I also taught for many years. The rhythms of the Pembrokeshire seasons, its landscape and coastline, and in particular the arrival of Spring are the inspiration for many of the paintings here. I sketch en plein air whenever possible and use sketches and photographs to develop paintings back in the studio.

Where my earlier works were entirely representational, many of these paintings explore abstract approaches that enable me to reflect a deeper, and more 'felt' personal experience. Working in this way is complex and challenging but the outcomes are an invitation to the viewer to share and creatively reinterpret these sensations. 'Always the light falls' is taken from a poem by Kenneth Patchen - 'The Snow Is Deep on the Ground'

Clare Rose