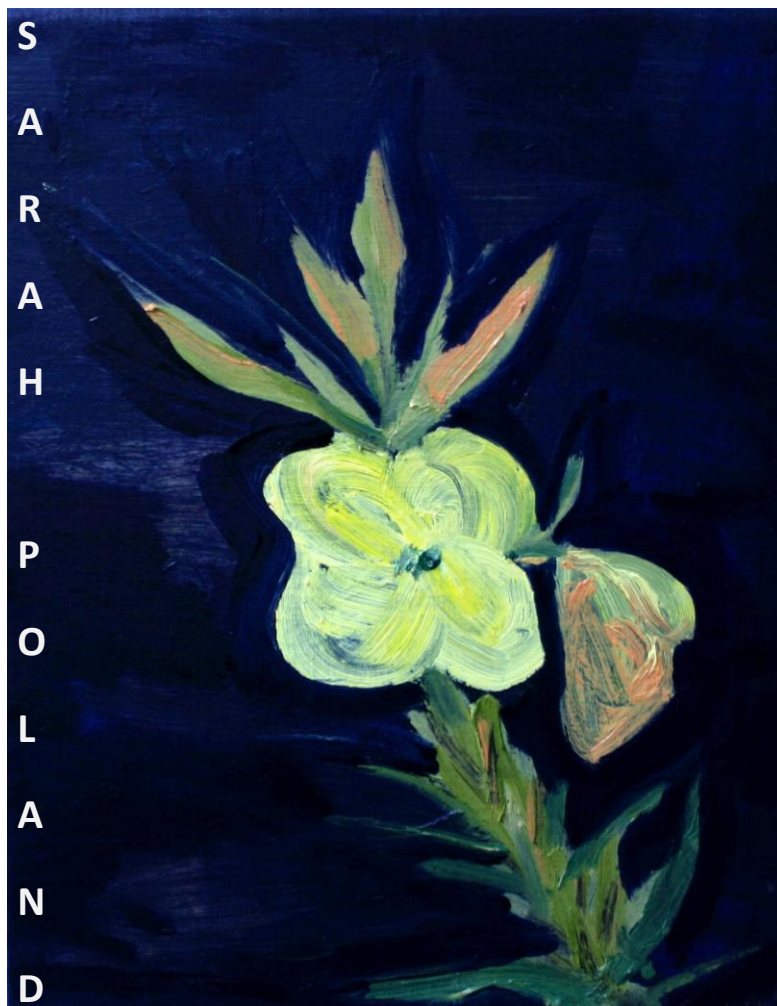


THE GALLERY YR ORIEL NEWPORT PEMBS



EVENING STAR DREAMING - PAINTINGS
SEPTEMBER 18 – OCTOBER 16 . 2020



1. Moths Moon Flower 5 – oils on birch, 18cm x 13cm framed - £350



2. Night Willow Herb 2 – oils on linen, 42cm x 27cm framed - £650



3. Evening Primrose Works on Paper 1 to 17 - 24cm x 26cm unframed - £495 each



4. Moths Moon Flower 4 - oils on linen, 56cm x 61cm framed -
£1,950



5. Vespertine Yellow 2 - oils on linen, 67cm x 72cm framed -
£2,350



6. Moths Moon Flower 3 – oils on canvas, 56cm x 61cm framed -
£1,950



7. Vespertine Yellow 1 – oils on linen, 67cm x 72cm framed -
£2,350



8. Moths Moon Flower 2 – oils on linen, 110cm x 120cm framed - £3,250



9. Night Willow Herb 3 – oils on linen, 41cm x 27cm framed - £650



10. Night Willow Herb 1 – oils on linen, 41cm x 27cm framed - £650



11. Moths Moon Flower 1 – oils on linen, 100cm x 82cm framed
- £2,950



12. Vespertine Yellow 3 – oils on linen, 61cm x 50cm framed -
£1,750



13. Moths Moon Flower 3 – oils on linen 70cm x 60cm framed - £2,150



14. Moon Flower 1 – oils on linen,
30cm x 24cm framed - £550



15. Moon Flower 2 – oils on linen,
30cm x 24cm framed - £550



16. Moon Flower 3 – oils on linen,
30cm x 24cm framed - £550



17. Evening Star 1 – oils on linen, 71cm x 77cm framed -
£2,650



18. Evening Star 2 – oils on linen, 71cm x 77cm framed -
£2,650

Sarah Poland

Evening Star Dreaming is a series of paintings made over a few years of the *Oenothera biennis* plant in my garden. *Oenothera biennis* has many names including evening primrose, evening star and moth's moonflower. It is a vespertine flower which blooms in the evening.

In the title, the word dreaming refers to ancient and traditional cultures; Aboriginal and Celtic, cultures of knowing land and spirit. *Oenothera biennis* is native to Europe and North America, it has a long history of use as a medicinal plant and all of its parts are edible. For this series I have entered a meditative state in order to listen and attempt to learn from this plant.



Born in the Scottish Highlands, Sarah graduated from Edinburgh College of Art in 1997. She moved to Cornwall for 10 years, seeking an 'on the edge' location to develop her work. In 2010 she moved to Wales. She moved to Aberystwyth to learn under the tutelage of master lithographer Paul Croft T.M.P. and graduated with an MA distinction in Fine Art in 2015. In 2018 Sarah won 1st Prize at the Glynn Vivian Open and also had a solo exhibition at Oriol Q in Narberth. She has undertaken artist residencies at Cil Rialaig Project in West Ireland, Wasps Studios in Shetland and Elysium Gallery in Swansea. Sarah has had many solo exhibitions with Belgrave Gallery in St. Ives and is also represented in Wales by Gallery Ten in Cardiff. She works mostly in oils and has her own small lithography press at home. www.sarahpoland.co.uk

The Gallery Yr Oriol Newport Pembs SA42 0TB . 01239 821514 . www.thegallery-yroriel.com . Open Mon – Sat 10 - 5pm